



Manual Chain Hoist SHB Model

Up to 10t

With Geared Trolley
Short Headroom Trolley Hoist

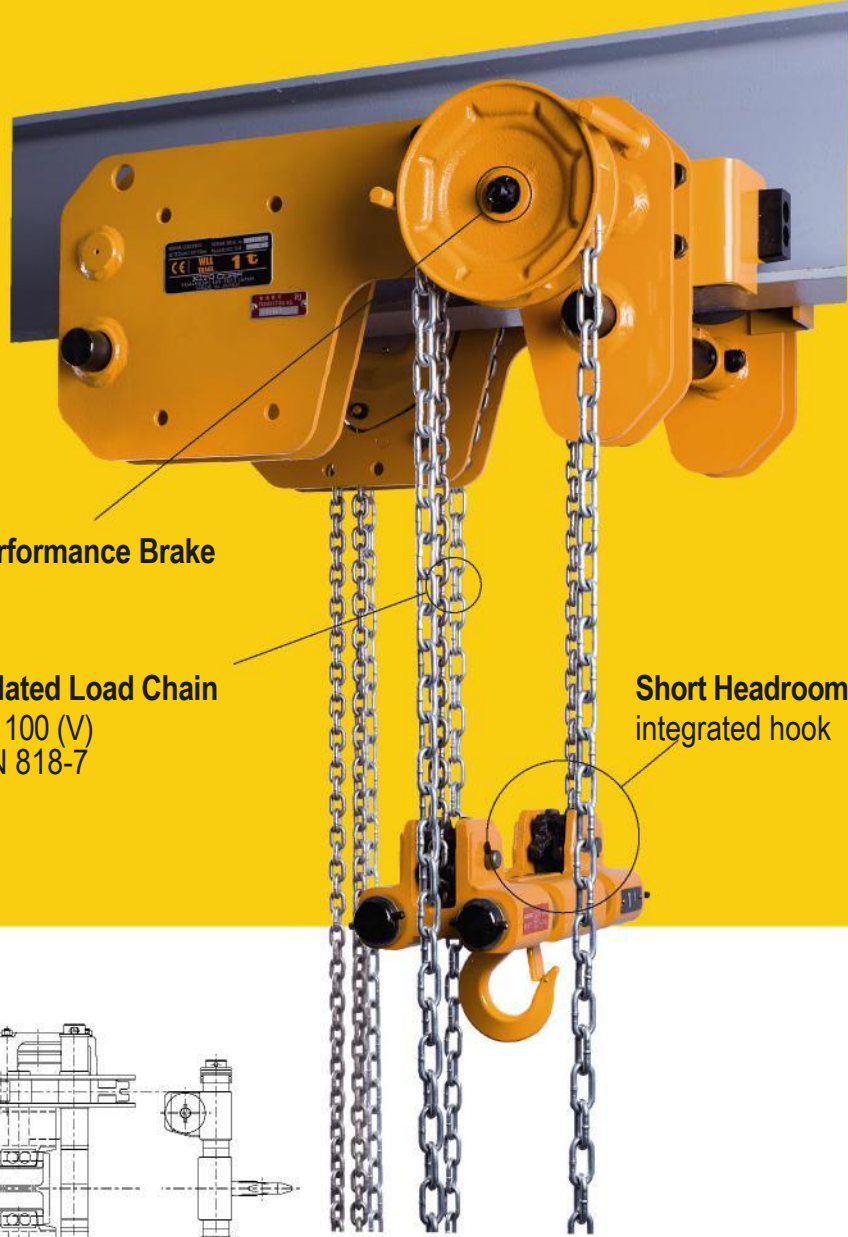


- > Shock resistant gear case
- > Minimized manual effort due to efficient drive train
- > Highly accurate gear
- > Double enclosures protect against dust and water

Made in Japan!

www.kito.net

Kito Europe GmbH
 Heerdter Lohweg 93
 40549 Düsseldorf
 Tel. 0211 - 52 80 09 - 0
 Fax 0211 - 52 80 09 - 59
info@kito.net
www.kito.net



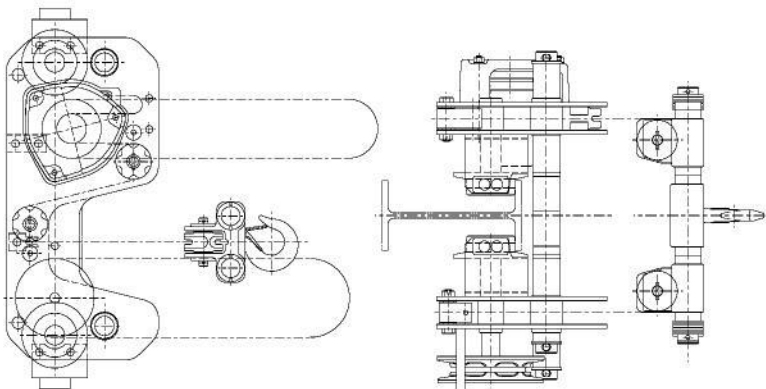
High-Performance Brake

Nickel-plated Load Chain
 Grade G 100 (V)
 Norm EN 818-7

**Short Headroom
 integrated hook**

KITO HEBEZEUGE

Mit Sicherheit das Original



Technical Data

Type	SHB010	SHB020	SHB030	SHB050	SHB075	SHB100	
Maximum capacity (kg)	1000	2000	3000	5000	7500	10000	
Standard lift (m)	3,0	3,0	3,0	3,0	3,5	3,5	
Length of folded handchain (m)	3,0	3,0	3,0	3,5	4,0	4,0	
Pull to lift load (daN) – Chain Hoist	31,4	28,4	36,3	44,1	45,0	47,0	
Pull at full load (daN) – Trolley	3,2	2,9	3,7	4,5	3,6	4,8	
Flange width (mm)	Standard	58-163	82-204	82-204	125-204	150-220	150-220
	W 30	164-305	205-305	205-305	205-305	221-305	221-305
Load chain diameter (mm)	5,0 x 15,1	7,1 x 21,2	8,0 x 24,2	9,0 x 27,2	9,0 x 27,2	9,0 x 27,2	
Chain falls	2	2	2	2	4	4	
Net weight (kg)	67,0	110,0	160,0	280,0	366,0	366,0	
Weight for additional 1m lift (kg)	3,0	4,2	4,6	5,4	10,8	10,8	
Headroom C (mm)	115	145	165	195	255	255	

Exclusion of liability
 KITO will not be held liable for any malfunction, lack of performance or accident if the product is being used in conjunction with any unauthorized part, or not in accordance with the operating instructions. Please take note of our owners manual. All specifications herein are subject to change without

Contact
 Kito Europe GmbH / Heerdter Lohweg 93 / D-40549 Düsseldorf
 Tel. +49 (0) 211 / 52 80 09 - 0 / Fax +49 (0) 211 / 52 80 09 - 59
info@kito.net / www.kito.net

